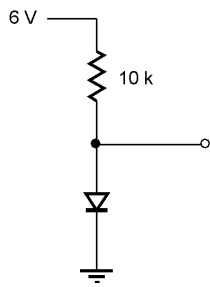
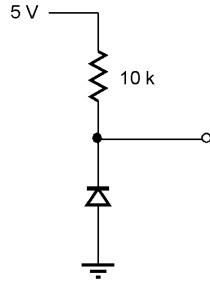


For the following circuits, determine the expected output voltage using our simple approximations for diodes.

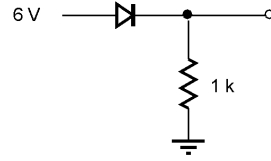
A



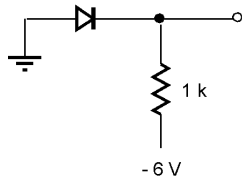
B



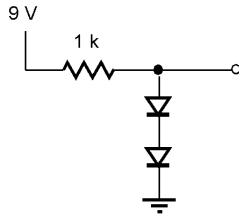
C



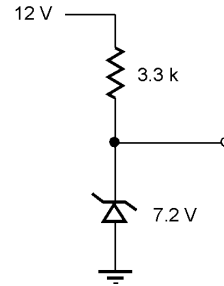
D



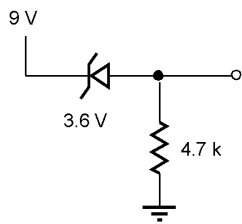
E



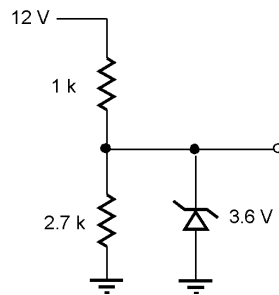
F



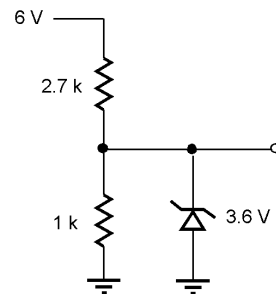
G



H

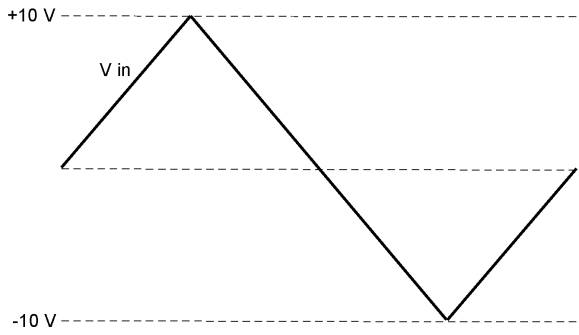
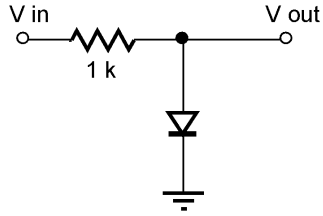


I

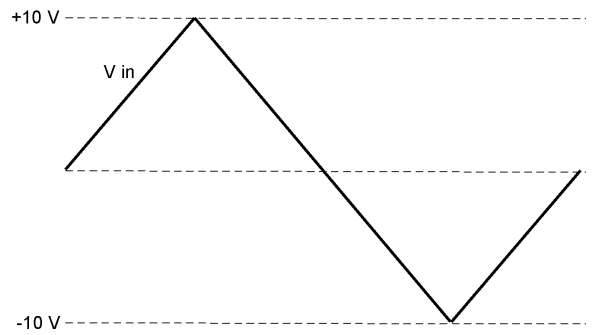
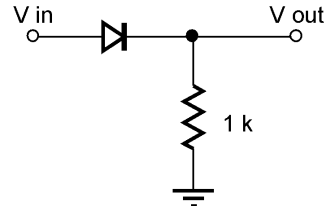


For each of the following circuits, there is a triangle wave connected to the input and shown on the figure below the circuit. Notice that the signal has both positive and negative portions. Draw the signal that you would expect to see at the output. Draw it right on the same figure over top of the input signal to the same scale.

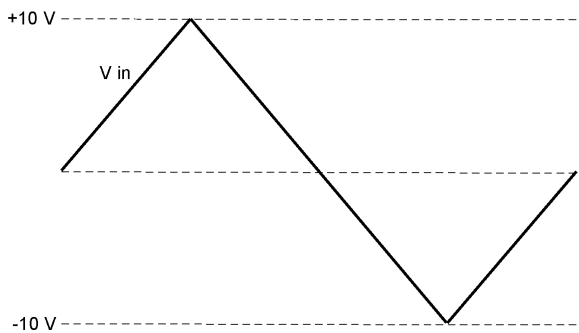
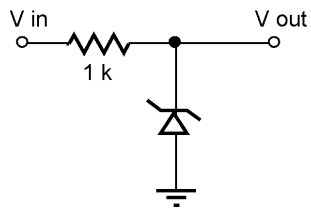
J



K



L



M

